

## DICTATOR DHE Lift (EN81-2)

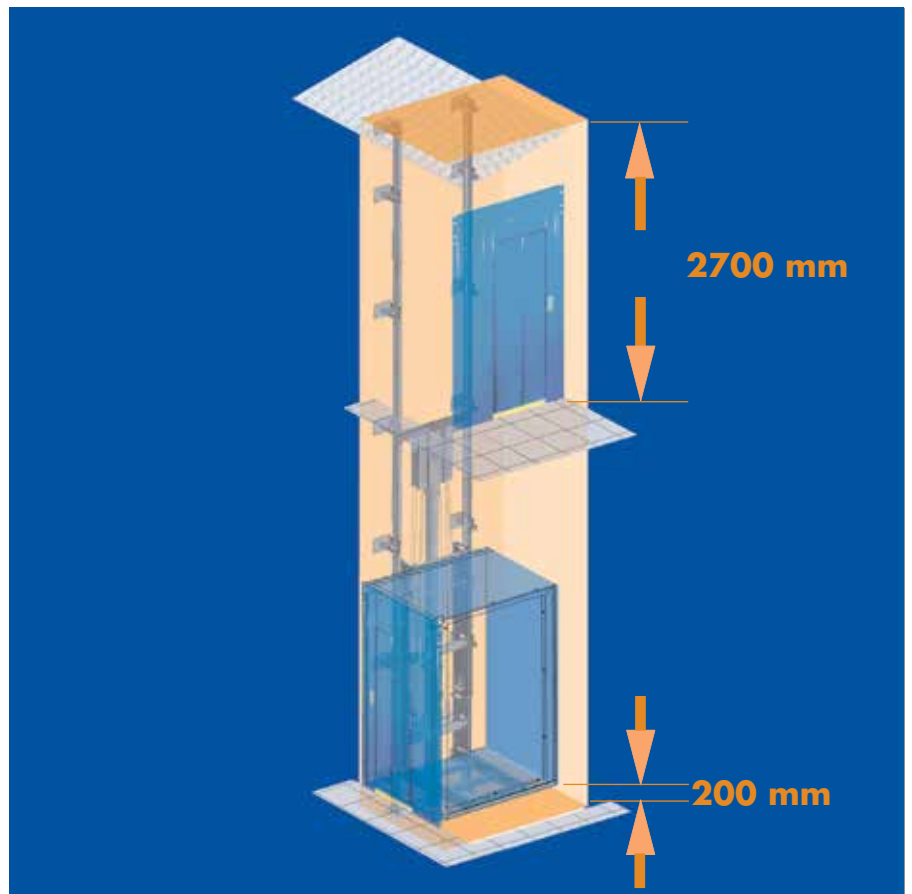
Reduced Pit of 200 mm and Headroom of 2700 mm

Nowadays it becomes more and more important to remove barriers from buildings that might impede the movement of handicapped persons. However, in quite a lot of existing buildings there is neither the space for the pit nor the headroom required for the installation of a lift. DICTATOR now offers in addition to the home lift DHM 500 the **DHE lift**. It is certified according to the **EN 81-2** by the ICICT/TÜV-Group Rheinland, certificate no. ICICT / LD - VB / 005 / 04.

### Its main advantages:

- Shallow pit: 200 mm
- Small headroom: 2700 mm
- For all sizes double access options (adjoining or through cabin)
- Only little space required.
- Custom made to size required: individual production permits the maximum use of the available space.
- No separate engine room required (hydraulic unit and control system in approved, lockable cupboard)

If no existing lift shaft can be used, the modular structured DICTATOR lift shaft system offers the ideal solution.



### Technical Data

Rated load / number of persons	225, 300, 450, 600 kg / 3, 4, 6, 8
Speed	max. 0.62 m/sec.
Travel	up to 20 m
Min. depth of pit / height of headroom	200 mm / 2700 mm
Dimensions	customised production
Access options	2 on all models, at 90° and 180°
Power supply	230/400 VAC / 50 Hz
Type	1:2 roped hydraulic drive



## I. Technical Data

The DICTATOR DHE lift is the ideal solution for complex requirements.

Its main advantages are the shallow pit, the small headroom, variable access options for all sizes and especially the **custom made design and production (no fix standard dimensions!)**.

	DHE 225	DHE 300	DHE 450	DHE 600
Load	225 kg	300 kg	450 kg	600 kg
Number of persons	3	4	6	8
Minimum area	0.60 m <sup>2</sup>	0.79 m <sup>2</sup>	1.17 m <sup>2</sup>	1.45 m <sup>2</sup>
Maximum area	0.70 m <sup>2</sup>	0.90 m <sup>2</sup>	1.30 m <sup>2</sup>	1.60 m <sup>2</sup>
Depth of pit	200 mm			
Headroom	2700 mm			
Travel	max. 20 m			
Number of stops	depending on travel, min. distance about 90 cm			
Dimensions of the cabin	custom-made to size required			
	clear height 2000 mm			
	dimension Y (see drawing) max. 1200 mm			
Number of accesses	one or two accesses (adjoining or through cabin)			
Cabin doors	automatic doors			
Door width (standard)(mm)	depending on cabin size: 600, 700, 800, 900, 1000			
Landing doors	automatic doors			
Speed	0.62 m/sec.			
Engine room	approved cupboard			
Mains connection	230/400 VAC / 50 Hz			
Motor rating kW	9.6	11.8	11.8	14.7
Precision of positioning	+/- 5 mm			
Safety gear	instantaneous safety gear			
	pipe rupture valve			
Control system	universal or selective			
Apron	foldable apron with one access			
	one foldable and one lifting apron with 2 accesses			

## II. Cabin

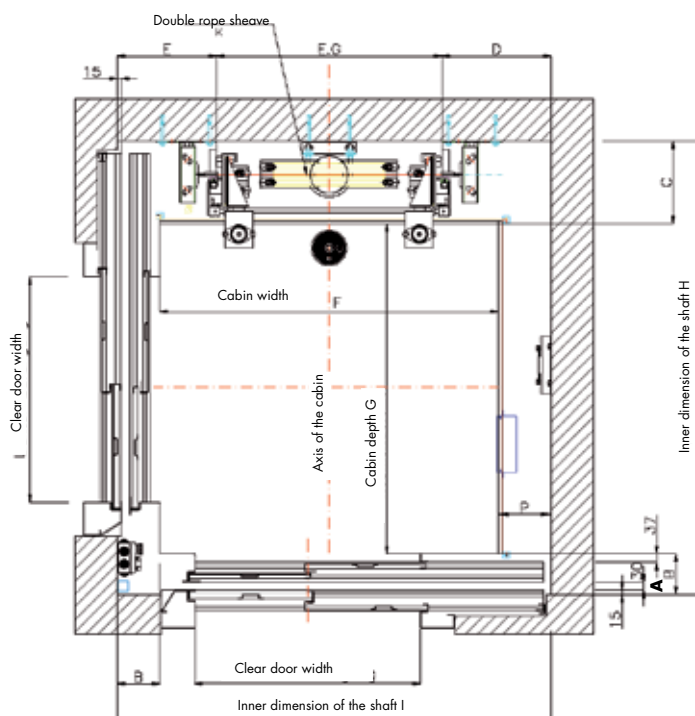
### Cabin Styling - Standard

<i>Walls</i>	laminated panels (7 standard designs) options: stainless steel or glass panels wall on the hydraulic side in two parts (removable)
<i>Mirror</i>	one wall of the cabin (to be chosen) with a mirror, half the cabin height, frame in stainless steel
<i>Ceiling</i>	white or black perforated sheet steel ceiling, optional stainless steel, with integrated cabin lighting
<i>Floor</i>	anti-slip linoleum floor option: prepared for stone floor
<i>Operating controls</i>	vertical stainless steel operating panel, stainless steel push buttons (with Braille engraving), display
<i>Handrail</i>	round handrail as option, nickel-plated or in stainless steel
<i>Battens, door frames</i>	skirtings, battens, door frames and lintels in stainless steel
<i>Cabin doors</i>	stainless steel telescopic sliding doors on demand also as central opening door
<i>Landing doors</i>	telescopic sliding door with primary coat stainless steel operating panel with call button and display

### Dimensions - Example

The DICTATOR DHE lift is always custom-made, i.e. it is adapted as best as possible to the available space. Therefore no tables with standard dimensions exist. The dimensions depend e.g. on the desired load, the number and position of the accesses, the type and width of doors. Normally the dimensions C and P, however, are standard dimensions.

The illustration shows a DHE with 2 accesses at 90°. The minimum dimensions for the DHE 300, DHE 450 and DHE 600 are shown in the tables below. The dimension G may not exceed 1200 mm.



Type	Minimum Dimensions (mm)					
	EG	A	B	C	D	E
DHE 300	650	75	157	335	140	290
DHE 450	800	75	157	335	145	300
DHE 600	800	75	157	370	145	300

Type	Minimum Dimensions (mm)					Max. FxG(m <sup>2</sup> )
	FxG(m <sup>2</sup> )	H	I	K	P	
DHE 300	0.79	1400	1400	320	100	0.9
DHE 450	1.17	1550	1550	400	100	1.3
DHE 600	1.45	1550	1550	400	100	1.6

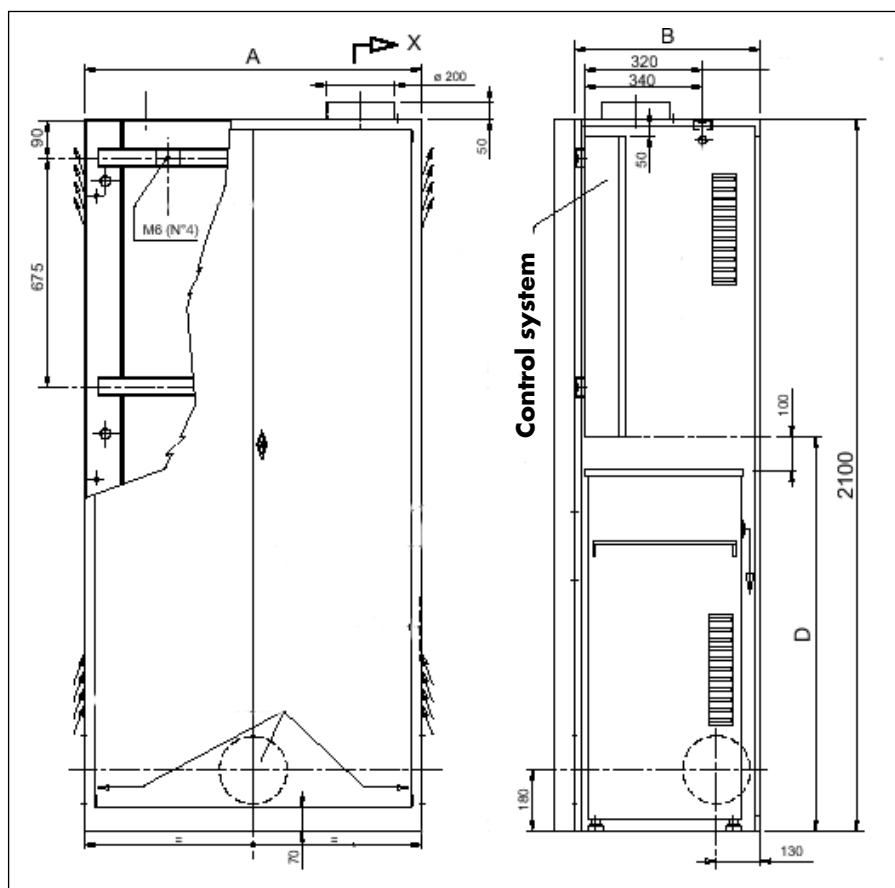
### III. Hydraulic, Components of Delivery

#### Cupboard for the Hydraulic Unit and the Control System

The DICTATOR DHE lift does not require a separate engine room. The hydraulic unit and the control system can be installed in an approved cupboard.

The cupboard is available in two sizes, depending on the model of DHE it is required for.

Dimensions (W x D x H)	DHE 225 and DHE 300	950 x 400 x 2100 mm
	DHE 450 and DHE 600	1030 x 620 x 2100 mm
Access door	two-leaf	
Finish	powder coated, RAL 7035	



#### Standard Components of Delivery

- Cabin (see specifications on the preceding page) with cabin and landing doors
- Complete hydraulic unit with 4 m hydraulic hose
- Rails with fixing brackets
- Control system
- Complete electrical installation for the lift shaft and flat cable