



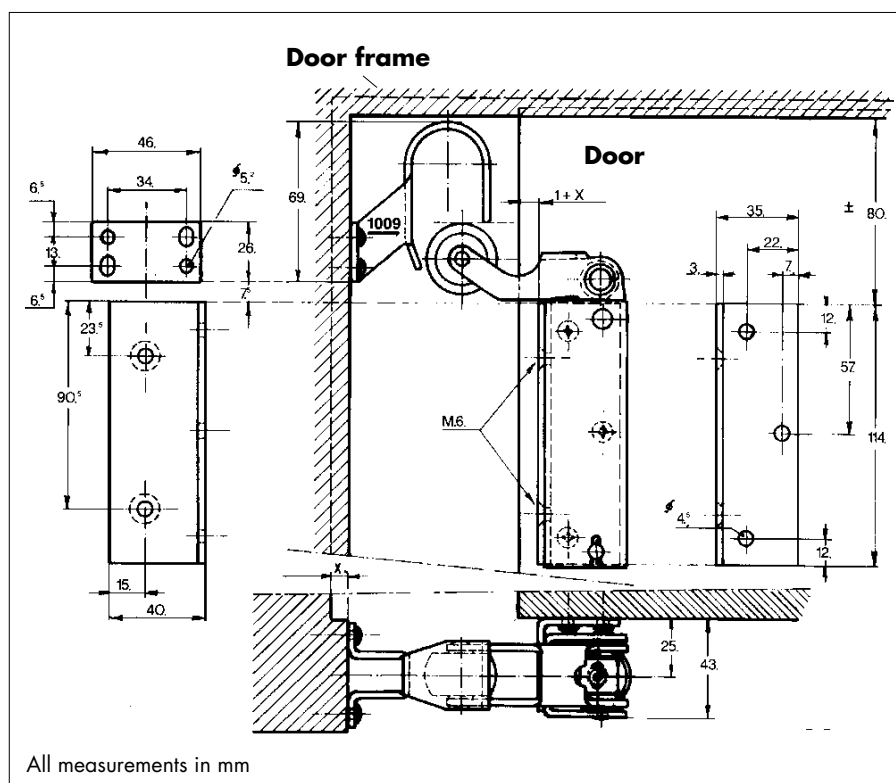
DICTATOR Z 1100 Door Check

For Room Sliding Doors

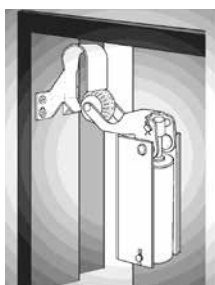
The DICTATOR Z 1100 door damper is a special version of the Z 1000 with mounting bracket designed for room sliding doors. The Z 1100 door damper slows down the closing speed on the last few centimetres and closes the sliding door completely. Especially with lightweight room doors this represents the ideal solution as normal final dampers, due to their integrated return spring (see Damping Engineering of our catalogue), might re-open these doors a little bit under unfavourable conditions.

The Z 1100 door damper comes with the 1009 hook (see page 02.014.00 for dimensions).

Dimensions



Mounting



The mounting bracket is screwed onto the sliding door about 1 mm from the closing edge and about 80 mm below the upper edge of the door. Fix the cylinder with the two bolts to the casing and then screw the door damper to the mounting bracket with two M6-screws. To determine the position of the hook, push down the roller lever. The roller should pass just below the front edge of the hook. Only use the two oblong holes when fixing for the first time. The two remaining screws can be used once you have adjusted the hook to the optimal position.

Order Information

Z 1100 door check, 1009 hook, 20 N, nickel-plated	part no. 300367
Z 1100 door check, 1009 hook, 50 N, nickel-plated	part no. 300498
Z 1100 door check, 1009 hook, 80 N, nickel-plated	part no. 300499
each with a mounting bracket	